

**TECHNICAL DATA**

# 1AC-II/1LAC-II VoltAlert

## The pocket-sized voltage detector



The next generation VoltAlert™ ac voltage testers from Fluke are easy to use—just touch the tip to a terminal strip, outlet, or cord. When the tip glows red and the unit beeps, you know there’s voltage in the line. Electricians, maintenance, service, safety personnel, and homeowners can quickly test for energized circuits and defective grounds on the factory floor, in the shop, or at home.

- Accurately identify incorrectly wired outlets
- The 1AC-II continually tests its battery and its circuit integrity with a periodic double flash visual indication using Fluke Volt-beat™ technology.
- Voltage detection of 90 V to 1000 V ac or 200 V to 1000 V ac depending on model, as well as a 24 V to 1000 V ac control circuit model.
- The VoltAlert™ Tester (1AC-II and 1LAC-II) is a Category IV –1000 V overvoltage rated product for added user protection, the highest rated of its kind.
- It is rugged, reliable, and has a two-year warranty.

### Specifications

#### OPERATING PRINCIPLE

Senses the steady state electrostatic field produced by ac voltage through insulation without requiring contact to the bare conductor. A red glow at the tip and a beeping noise (if not switched OFF) indicates the presence of voltage.  
*Note: Does not respond to random electrostatic discharge.*

#### VOLTAGE SENSING RANGES

Nominally, 90 V AC to 1000 V AC or 200 V AC to 1000 V AC depending on model, 45 Hz to 405 Hz; also a 20 V to 90 V control circuit model

#### DETECTOR TIP STYLE

Blade or round, depending on model

#### LIGHT SOURCE

One high intensity red LED

#### SAFETY RATING

1000 V, CAT IV

#### IP RATING

IP 40

#### OPERATING TEMPERATURE RANGE

-10 °C to 50 °C

#### OPERATING HUMIDITY RANGES

0 % to 95 % (0 °C to 30 °C)

0 % to 75 % (30 °C to 40 °C)

0 % to 45 % (40 °C to 55 °C)

#### OPERATING ALTITUDE

3000 meters

#### BATTERIES

2 AAA alkaline batteries included



## Related standards and regulations for:

### Safety

Europe and ROW: Low voltage directive and related standards as: EN61010 respectively IEC61010 for international requirements

### EMC

Europe and ROW: EMC directive and related standards as: EN61326 respectively IEC61326 and their subset for ESD. Not all EMC standards are necessary due to no contact to mains voltage.

### Environmental

Especially in European markets with relations to WEEE and RoHs directive for the used materials and information in the user documetation (manual)

## Ordering Information

**Fluke-1AC-A1-II** ACV Detector 90-1000V, ENGL/LASPN/CFR  
Part Number 2432932

**Fluke-1AC-A2-II** ACV Detector 90-1000V, BRPORT/JAP/CHIN-T  
Part # 2432944

**Fluke-1AC-E1-II** ACV Detector 200-1000V, ENGL/GER/FREN/DUTCH  
Part # 2432967

**Fluke-1AC-E2-II** ACV Detector 200-1000V, DANSH/NORW/SWED  
Part # 2432971

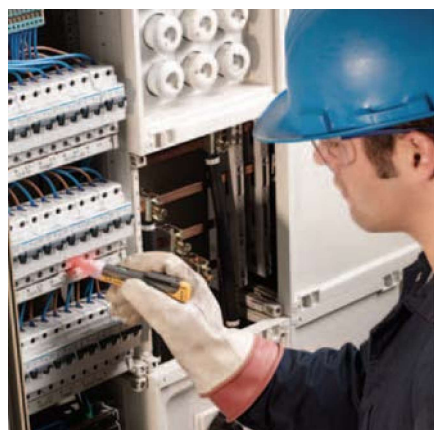
**Fluke-1LAC-A-II** Low Voltage Detector 20-90 VAC AMERICAS PACIFIC  
Part # 2433021

**FLK-1AC-A1-II-5PK** Volt Alert, 5 Pack For USA  
Part # 2433042

**FLK-1AC-E1-II-5PK** Volt Alert, 5 Pack For EUROPE  
Part # 2433056



Americas version



European version



Low volt version

**Fluke.** Keeping your world up and running.®

**Fluke Corporation**  
6920 Seaway Blvd., M/S 143F, Everett, WA  
98203 U.S.A

**Fluke Europe B.V.**  
PO Box 1186, 5602 BD  
Eindhoven, The Netherlands

**For more information call:**  
In the U.S.A. (800) 443-5853 or  
Fax (425) 446-5116  
In Europe/M-East/Africa +31 (0) 40 2675 200 or  
Fax +31 (0) 40 2675 222  
In Canada (800)-36-FLUKE or  
Fax (905) 890-6866  
From other countries +1 (425) 446-5500 or  
Fax +1 (425) 446-5116  
Web access: <http://www.fluke.com>

©2005-2018 Fluke Corporation.  
Specifications subject to change without notice.  
Printed in U.S.A. 1/2018 2513868c-en

**Modification of this document is not permitted without written permission from Fluke Corporation.**